

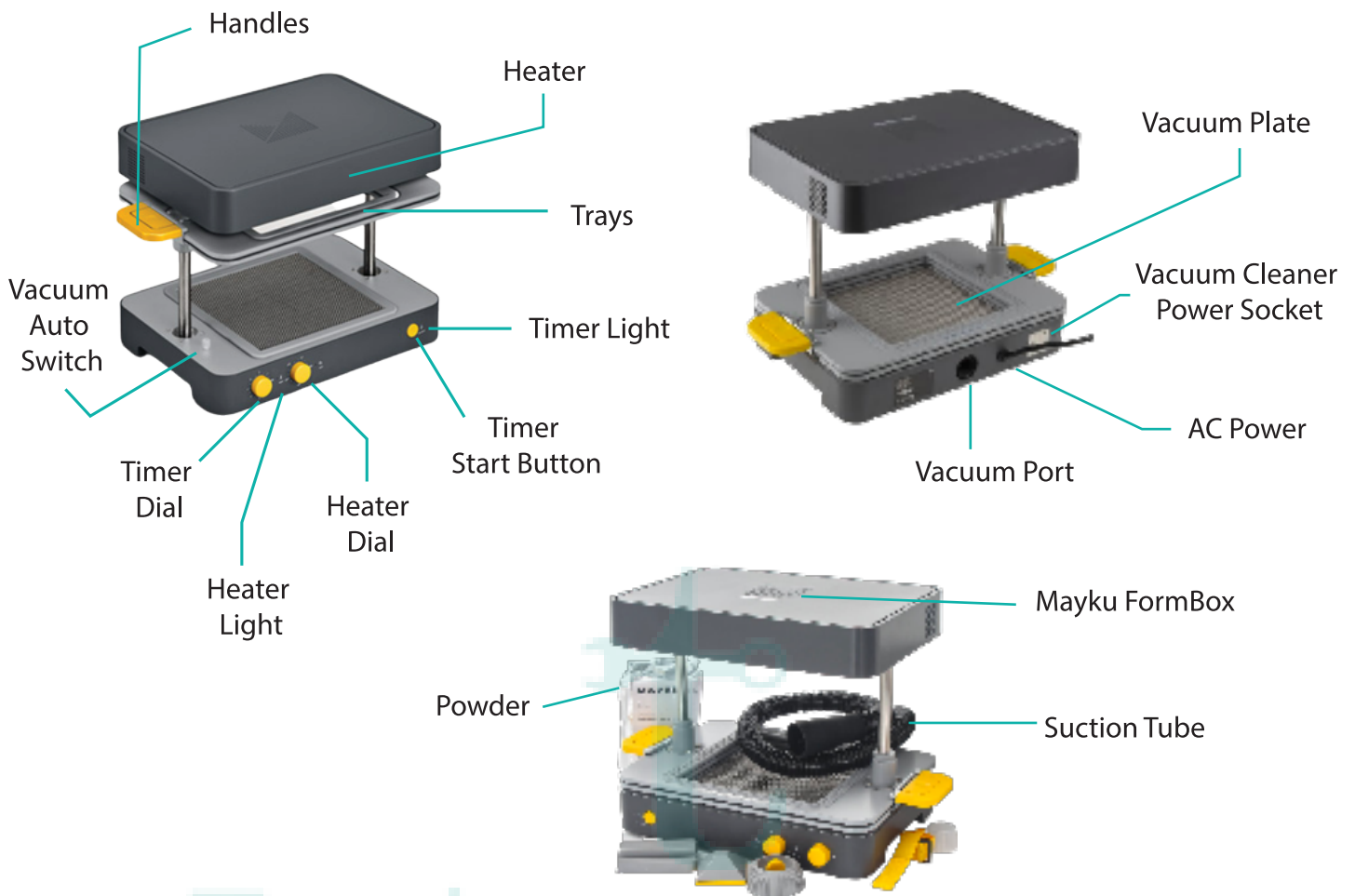
Quick start guide

Vaccum Forming Machine

Mayku Formbox



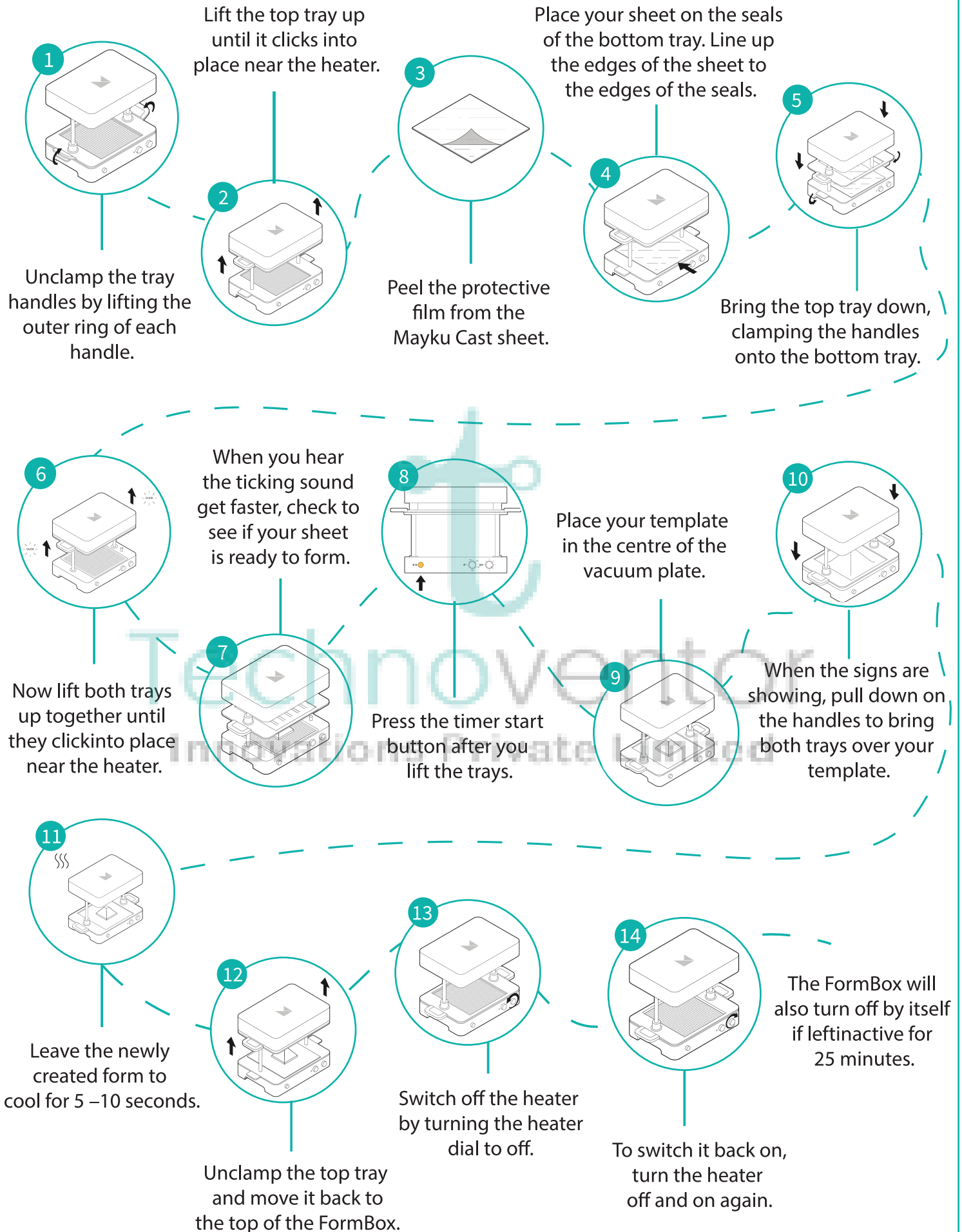
Machine Appearance & Accessories



Machine Startup & Testing

<p>1</p> <p>Plug your FormBox into the mains using the power cable</p>	<p>1</p> <p>Plug your vacuum cleaner's power cable</p>	<p>1</p> <p>Insert the smaller end of the FormBox vacuum tube into the port on the back of the FormBox.</p>
<p>2</p> <p>Connect your vacuum cleaner's hose into the other end of the vacuum tube.</p>	<p>3</p> <p>To turn your FormBox heater on, select a temperature setting on the heater dial.</p>	
<p>4</p> <p>5 temperature 2:00-2:20 Heating Time</p> <p>Wait for your heater to warm up</p>		

Operation



DO's

- ✓ Always leave the machine in the "down" position when not in use.
- ✓ Be careful while clamping and unclamping the trays.
- ✓ The heaters, frame and table surfaces are VERY HOT! Use extreme care to avoid being burned.
- ✓ Familiarize yourself with the location and operation of the Emergency Shutoff button and use it when necessary.
- ✓ Always make sure the work area is clear of all people and things that could be crushed.
- ✓ Always step away from the table before pushing any buttons.

DONT's

- ✗ Do not operate the vacuum forming machine unless you are trained and authorized to do so.
- ✗ Never attempt to repair or make any adjustments to the machine without making sure the power is off.
- ✗ Do not keep long hair, loose clothing, ties, scarves, etc., close from sources of entanglement.
- ✗ Never activate the machine when you or anyone else has any part of his body underneath or in contact with the machine.
- ✗ Beware of pinch points between the frame and the table. Hands and fingers could be crushed.

Machine Specifications

Size	Height - 315mm , Length (With Handles) - 466mm , Width - 274mm , Forming bed - 200mm x 200mm , Draw Depth - 130mm.
Weight	Weight - 13kgs
Power	110V and 240V
Temperature	160C - 340C

For any queries contact:

✉ service@technoventor.com

☎ 8828294964 / 7304419928